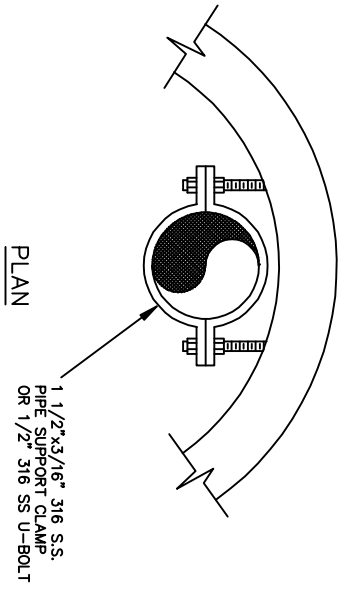
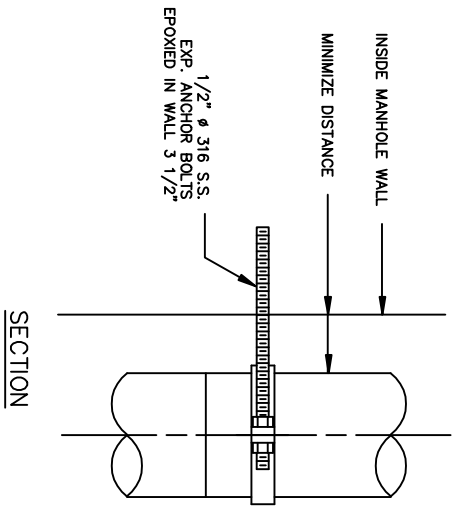
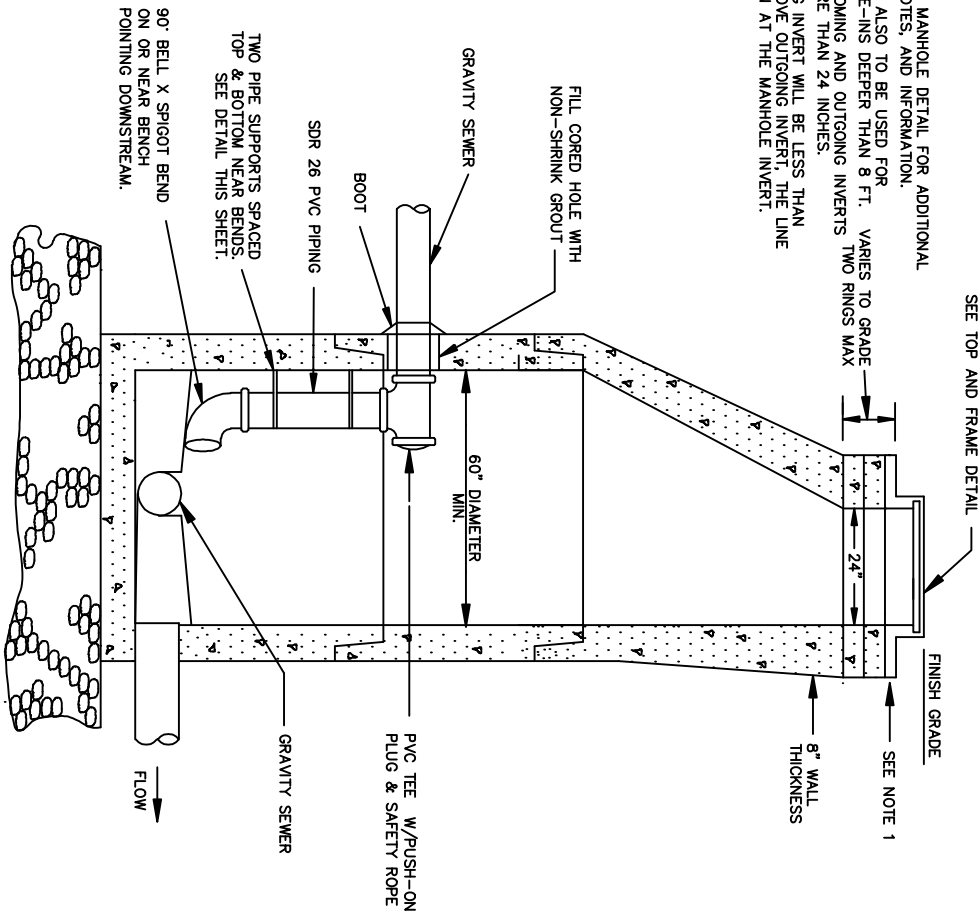


- NOTES:**
1. SEE ECCENTRIC MANHOLE DETAIL FOR ADDITIONAL DIMENSIONS, NOTES, AND INFORMATION.
 2. THIS DETAIL IS ALSO TO BE USED FOR FORCE MAIN TIE-INS DEEPER THAN 8 FT. VARIES TO GRADE DIFFER BY MORE THAN 24 INCHES.
 3. USE WHEN INCOMING AND OUTGOING INVERTS TWO RINGS MAX DIFFER BY MORE THAN 24 INCHES.
 4. WHEN INCOMING INVERT WILL BE LESS THAN 24 INCHES ABOVE OUTGOING INVERT, THE LINE SHALL COME IN AT THE MANHOLE INVERT.



PIPE SUPPORT DETAILS

INSIDE DROP MANHOLE

CHARLESTON WATER SYSTEM		DRAWING NO. 49
INSIDE DROP MANHOLE		
APPROVED BY: CWS	DATE: MAR 2000	
SCALE: NTS	REVISED: NOV 2011	